

Celebrating our history at Leishman's Fine Furniture!



Before 2001

Bears skating, rabbits playing, and chipmunks still to this day remain painted on the walls of the skating rink, which is now the home to Leishman's warehousing. If you listen real hard, one can still hear the laughs of joy, shrieks of trips and falls, and the music playing above. Upstairs, above the skating rink, many bowling lanes separate adults from children.

Today, 50 years later, customers continue to smile as they recall the memories of those "first date" nights, where they shared a night of fun bowling or a night of skating in the building which now houses Santa Fe's premier furniture store: Leishman's Furniture. Except for a few coats of paint, the metal railings and carpeted walkway ramps from the bowling alley, the beautifully painted mural walls below, and, "John's wall", which is more commonly known as the "Cloud Wall", remain as a testament of time, untouched for decades.

2001

John Stevenson was ready for Santa Fe but not for retirement. John had a tremendous passion for flying, piano, and reading of philosophy, history, skiing, and family. He had just sold his small airport for glider planes north of Los Angeles. It was fun while it lasted, giving sail plane rides to movie stars (many movie sets were located nearby) and teaching jumbo jet pilots to land small planes with no engines. (John particularly enjoyed teaching the 747 pilots from Japan to "just tickle the belly of the plane" as they touched down. They tended to land hard.) But glider planes are a young man's sport and John sold the glider port and retired to Santa Fe in his forties.

Whether he was sailing above in his glider plane, playing the piano with "Tiger Lily" sitting atop his lap or simply sitting next to him on the piano bench, or even skiing the slopes with his beautiful bride Katie, he loved to be with and to service people. Retirement did not last long.

2002

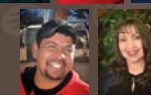
Leishman's Furniture came to Santa Fe in the 1980s, when then owner, William L. Broom Jr., owner of Broom Furniture decided to retire from more than 30 years in the family furniture business. Broom Furniture was founded by his grandfather W.S. Broom. Long time Santa Fe residents remember when it was Broom's Furniture on the Plaza during the sixties and seventies. At some point, no one can remember exactly when, it moved to the De Vargas Mall area. In the 1980s the store was acquired by the Leishman furniture family of Albuquerque. They did not own the store long, but they gave Leishman's of Santa Fe a new and, as it turned out, permanent name

2002 – 2007

In 1992, John took a part time job as a salesman at Leishman's of Santa Fe in time to help the store move into the old bowling alley located on West Cordova Rd. In 1995, John bought the store. He believed a niche store that focused on quality patio furniture, mattresses and upholstery could do well in Santa Fe. He knew excellent service was critical to success. Many stores offered similar products, but lacked the high level of service offered by Leishman's of Santa Fe. He worked with highly reputable vendors on the purchase and display of finely made furniture. He developed a team of highly trained professionals dedicated to the highest level of customer service which Santa Fe residents have come to expect.



Voted #1 Santa Fe Furniture Store in 2012 by the readers of the Santa Fe Reporter.



2008–2010

The year 2008 was a bad one for us all. In late 2007 John was diagnosed with ALS, Lou Gehrig's disease. We were just beginning to cope with that as the economy dived into a recession.

Leishman's of Santa Fe is a strong store. It survived both the recession and John's eventual death in 2012. But it has emerged from this perfect storm a little different than it was during the economic boom. That's because times have changed.

The furniture industry was savaged by the recession. Many furniture manufacturers went bankrupt and those that remained reduced their lines and cut their quality. Many furniture retailers also went out of business. One has only to look around Santa Fe to see this. But Leishman's of Santa Fe remained here and was financially sound. With John's passing, Katie Stevenson took control of the business and expanded specific merchandise lines. New people were hired and new ideas were formulated to build the business further.

The patio selection remains the largest and best in the state. We kept our fine, popular vendors — O.W. Lee, Gloster, Lloyd Flanders, Woodard, Homecrest and more—while adding fresh colors and new lines. Our Sealy Optimum and Stearns and Foster Estate mattresses are of the highest quality and sold at the lowest prices you would find anywhere, guaranteed.

Ekornes seating gallery was one of the top Ekornes galleries in the nation. Each year we would grow with new models of Stressless® recliners and many more stationary sofas and chairs in great new colors. Besides keeping Ekornes, Gloster, Woodard, Jensen Leisure, O.W. Lee, Homecrest, Pride Castelle, Sterns and Foster, Sealy, Rowe, Flexsteel, Howard Miller, Hekman, we've added Bernhardt, Wesley Hall, Braddington Young and Palatial Leather to our list and brought in improved occasional furniture and accessories to complement these lines.

Together, with my two Bassett Hound pals, Toby and Penelope, we get our deliveries done.

2011–2014

John also recognized the importance of outdoor furniture to our lifestyle in Santa Fe. Our climate allows us to live outdoors much of the year. John supplied the furniture that made us comfortable on our porches and added extra rooms onto our homes without involving a contractor. Today Leishman's of Santa Fe is the largest patio furniture showroom in New Mexico. You'd have to travel to Denver, Dallas or Phoenix to find a larger one. John, with the partnership of his wife Katie, brought the same passion and love for his gliders, reading, philosophy, skiing, piano, and history, to create a new type of furniture store for the Santa Fe area.

2015

Today is a "new now" for me. John and I shared a great life together. Along with a very dedicated and talented staff, built this Santa Fe furniture store icon known as Leishman's of Santa Fe. While I look forward to retirement and having the time to spend doing things I really enjoy, I will forever be thankful and grateful for my wonderful years with my Leishman's family.

